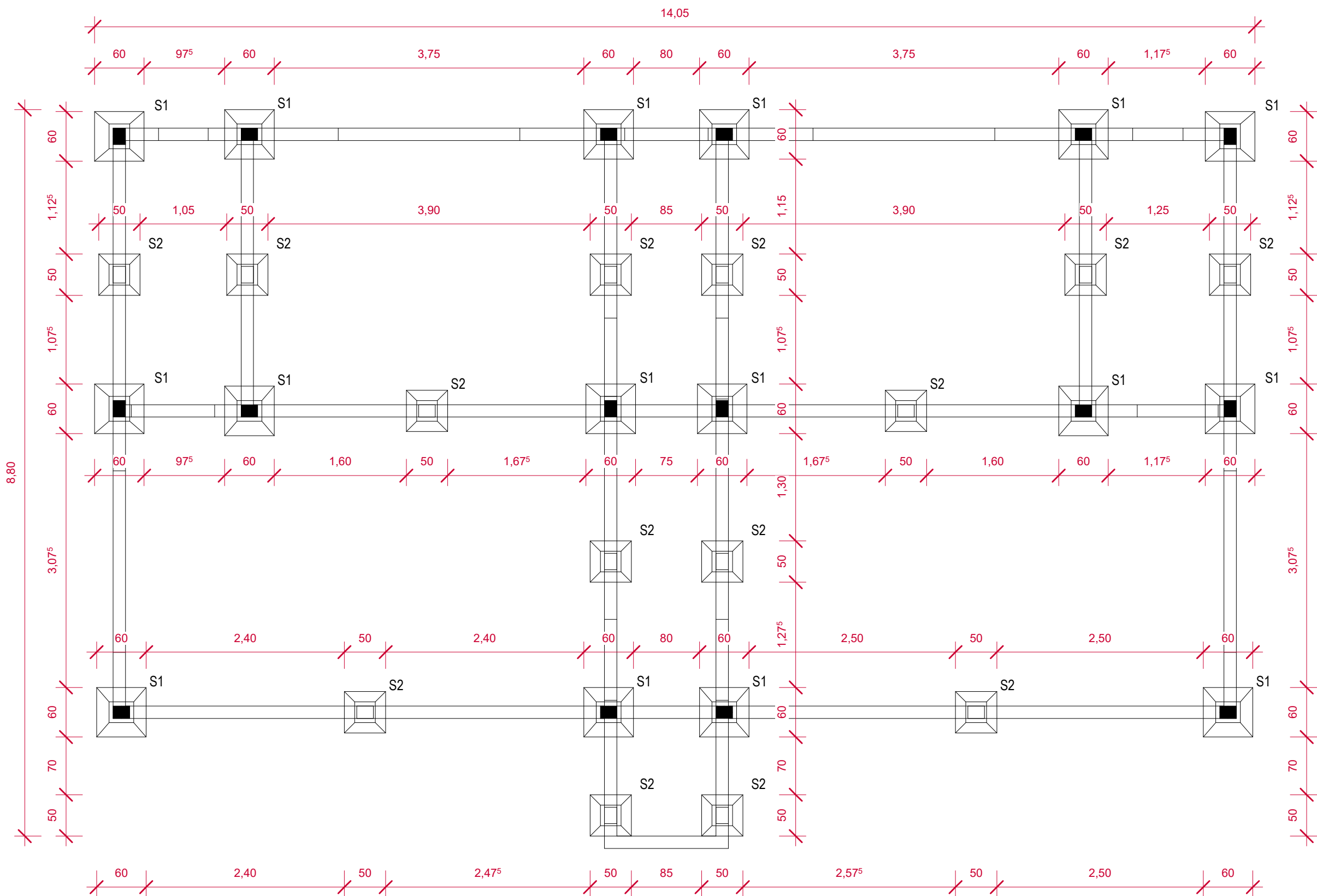
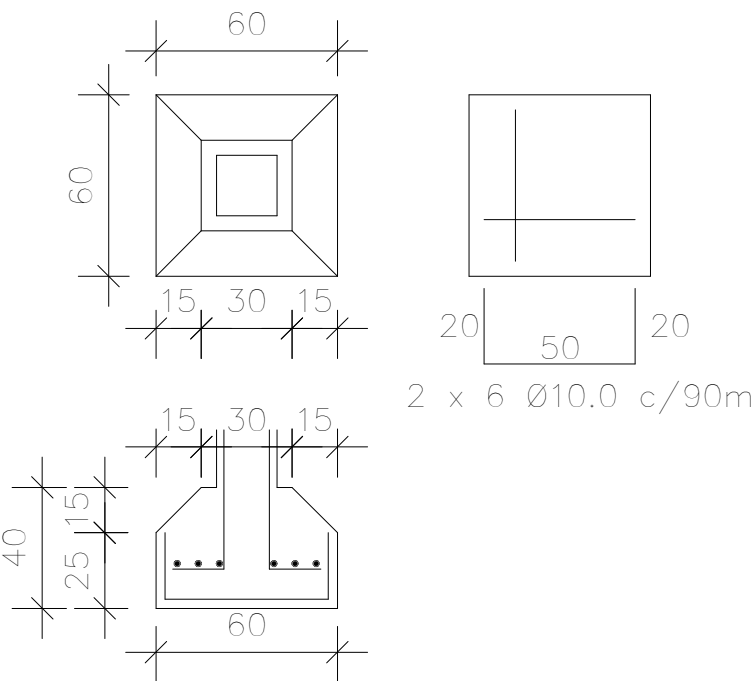


Pilaretes Platibanda

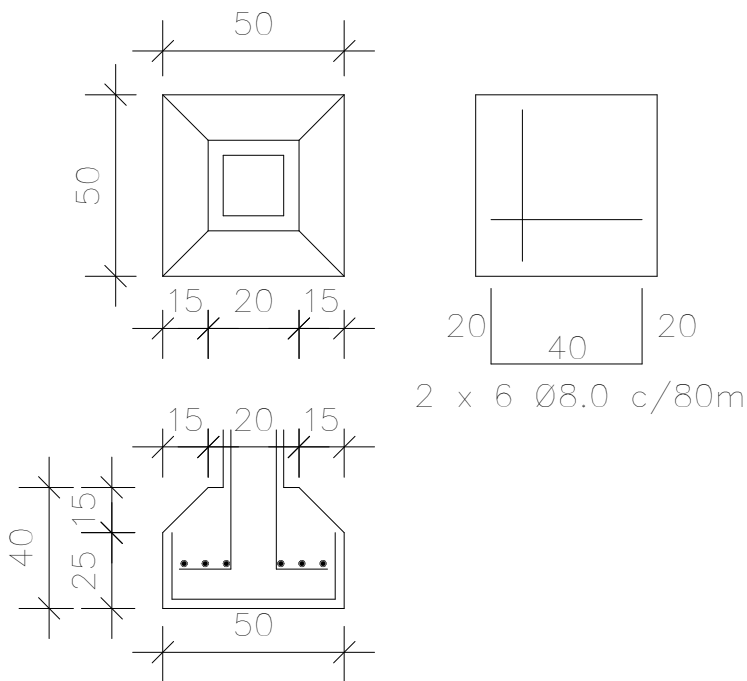


Locação dos Blocos

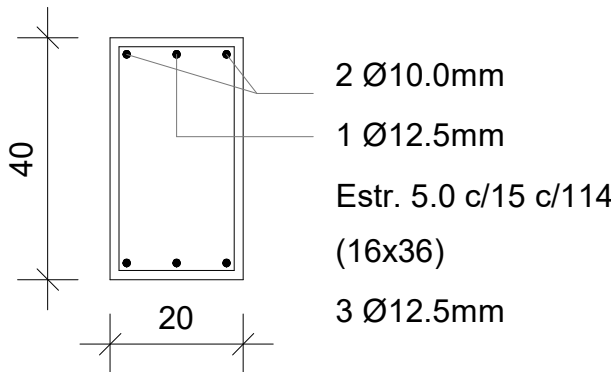
Sapata 1 - 60x60x40 (Pilar)



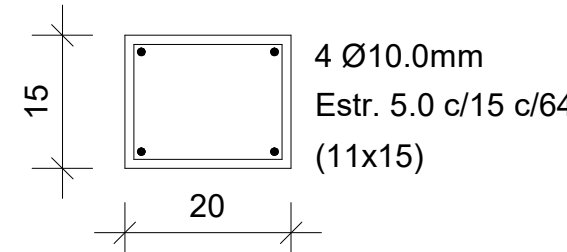
Sapata 2: 50x50x40



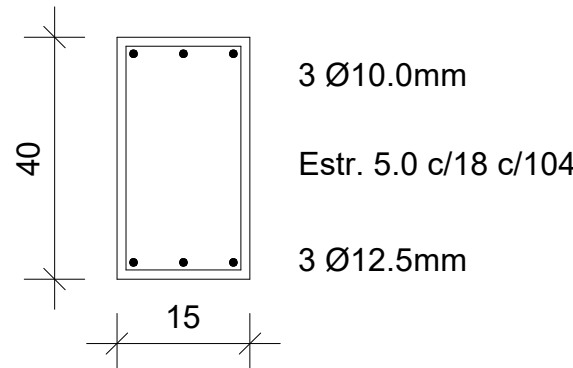
Viga Fundação



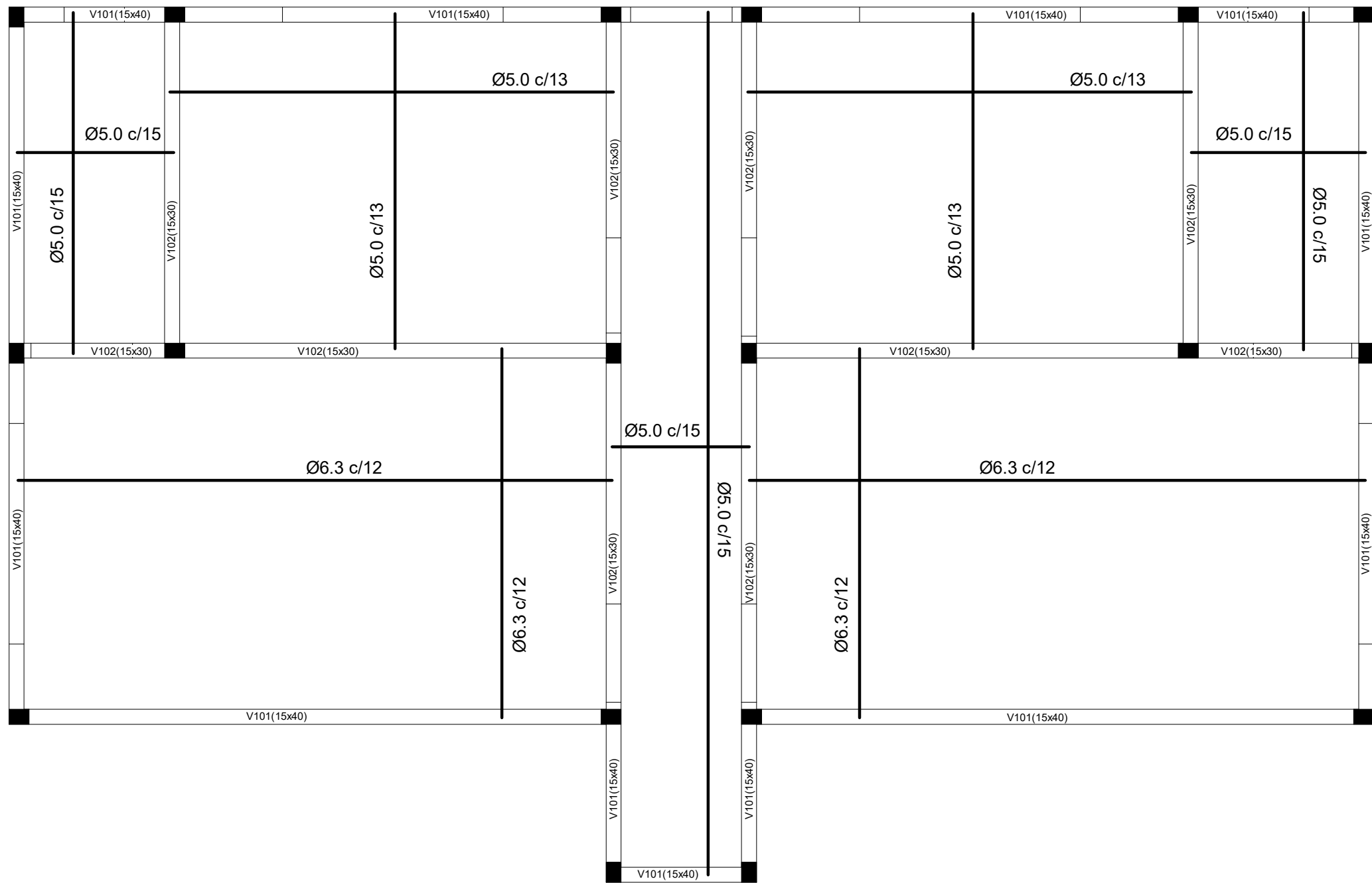
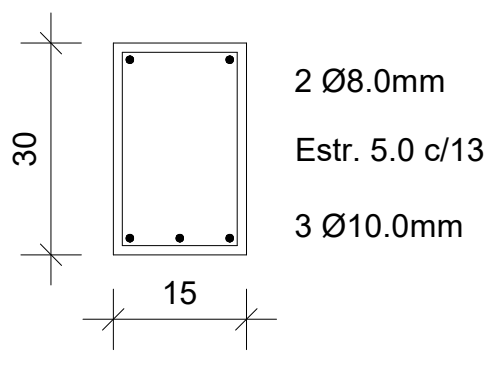
Pilares (18 unidades)



V101 - (15x40)



V102 (15x30)



Laje e Pilares

	PROJETO DE AMPLIAÇÃO FUNDAÇÃO - BLOCOS / LAJE E PILARES / PILARETES PLATIBANDA Rua Carlos Bohne, nº 720 Bairro: Centro - Quadra: 17 - ARAMBARÉ/RS	Prancha: 03
		Arquivo: Arqui.rvt
		Área: 99,49 m²
		Indíce: Indicador
Fones: Celular: (51) 99368-8282	PREFEITURA MUNICIPAL DE ARAMBARÉ/RS	Escalas: Indicador
Desenho: João Paulo Schmeigel		Unidades: m, cm, m²
		Data: ABRIL/2025
Schmeigel Engenharia Ltda CREA RS 272.172 e-mail: eng@schmeigel.com		